

2021

SYNOD REPORT

PREPARED FOR THE
OREGON SYNOD BY



A Century of Health, Justice and Hope
Est. 1921



4040 S 188th St Ste 300
SeaTac, WA 98188

www.lcsnw.org
development@lcsnw.org

FAITH IS WHAT BRINGS KYLE TO WORK.

LCS Northwest staff member Kyle was raised in a Lutheran tradition, and his work is an expression of a Lutheran ideal - a calling to love our neighbor.

His first encounter with social work and faith was a visit to Compass Housing Alliance in downtown Seattle. Watching staff selflessly serve others' needs was the moment he started feeling his calling for social work, a calling that working for LCS Northwest affirmed.

"It is right in the core of our mission statement: health, justice, and hope," Kyle said. "Families are hurting when they come to us, but we work to transform suffering into meaning, strength and hope. Families leave us recognizing who they are, what they are capable of, and having found new hope."

Being familiar with one organization and deeply involved in the other, Kyle has been following the news of the recent affiliation agreement between Compass and LCS Northwest.

"It is exciting from my perspective to see Compass and LCS reuniting in their common bond to serve," he said.

Read on for more information about the Compass and LCS Northwest affiliation!

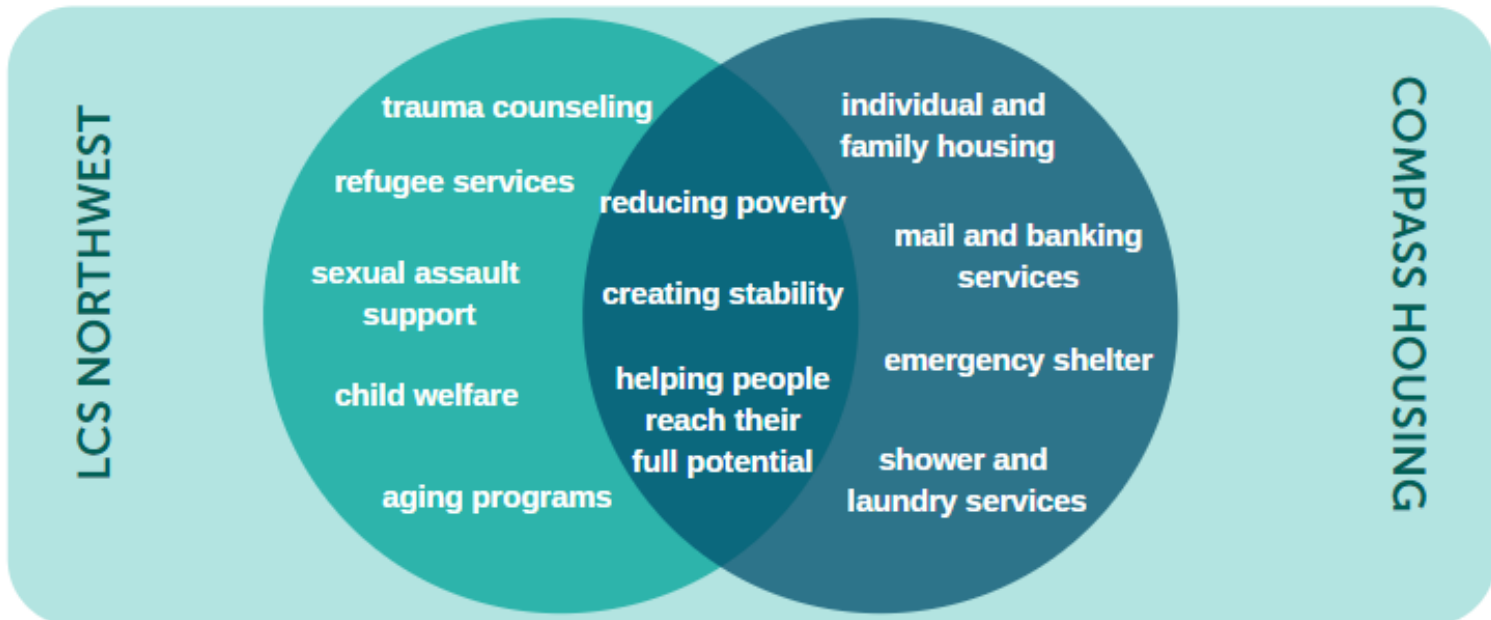


For 100 years, Lutheran Community Services Northwest has focused on a mission of **health, justice and hope**. At the same time, Compass Housing Alliance has centered on a mission of **affordable housing and emergency services**. With Lutheran roots as our common thread, we now have an *innovative vision to come alongside vulnerable community members with housing security and support services*. Our collaboration is an innovative approach to housing retention, mental health support, and addressing root causes to build stronger communities.

In 2021, Compass Housing Alliance became an affiliate of Lutheran Community Services Northwest. We're now coordinating services and programs to help people get into and stay in a home. **But it's more than that. We're changing lives.**



A STRONG FOUNDATION



With similar missions and a strong, shared foundation, LCS Northwest and Compass are committed to building durable, nimble programs that consistently improve on our model of service.

STRENGTHENING OUR SHARED VISION

People desire independence and self-sufficiency, but some need more help to get there. **We envision a supportive community where everyone is housed and networks of partners offer a variety of targeted programs to increase stability.** Some of the services that help keep housing clients stabilized include: counseling, drug use rehabilitation, financial management education, language classes, citizenship classes, job skills and opportunities, parent education. We imagine community gardens, a kitchen for shared meals, a bank, a clinic, a mailroom, technology-enabled units, on-site and mobile services that deliver help to people where they are, allowing residents to live healthier, more independent lives. **The possibilities are blooming with hope and resilience.**





100 YEARS OF HEALTH, JUSTICE AND HOPE

Our roots date back to 1921 when Lutheran Compass Mission opened its doors in Tacoma. We had just weathered World War I and a global pandemic, and the mission was busy serving “down-and-out” members of the community. Lutherans in Portland launched a similar effort known as the Lutheran Welfare Society in 1926.

As human suffering escalated during the Great Depression in the 1930s and World War II in the 1940s, Lutherans continued to help vulnerable individuals and families. We also welcomed our first refugees from war-torn Eastern Europe as our new neighbors.

Today, thanks to the generosity and energy of Lutheran individuals and congregations, Lutheran Community Services Northwest is celebrating 100 years of health, justice and hope.

[Current board member and former pastor and Bishop Kirby Unti shared a special Centennial greeting. Click here to listen!](#)

THE PAST PROPELS US FORWARD

You help us serve the vulnerable in our community as our founders did. "Build strong communities," they said. It was tough then too — people in need and far from home, families trying to stay together. They built stronger communities in their neighborhoods. A sense of duty, handed down and paid forward.

Now, our founders are calling on us to serve. "Build strong communities" echoes in our work today. We can feel some part of our founders with us as we support people and build stronger communities for the next 100 years.

Be part of history and the future. Here's how:

GIVE

VOLUNTEER

SHARE

Click either of the links above for more info!

Add a link to lcsnw.org to your website or share about our work in your newsletter or bulletin!

Health. Justice. Hope.